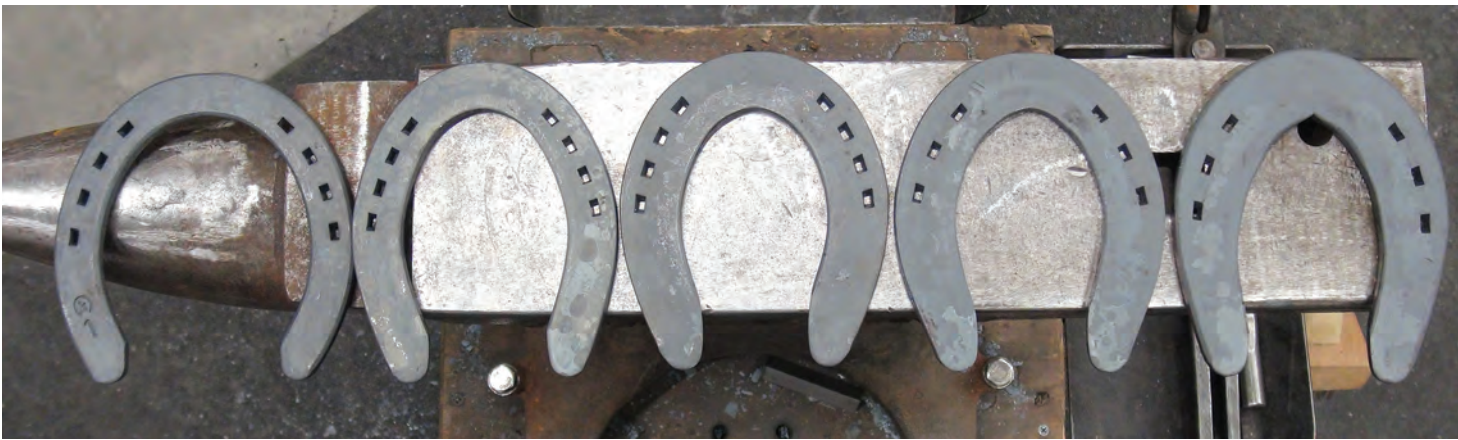


The Natural Angle

VOLUME 17: ISSUE 3

Pride Series Plates for Western Horses

By Bobby Menker, CJF APF-I



The Pride series plain stamped shoes from Kerckhaert give me all the hind shoe options I need for shoeing a variety of western performance horses. I'll walk through the key points of each shoe that help me make my choices. The most common disciplines for these shoes in my business are:

- *Reiners*
- *Cutting Horses*
- *Working Cow Horses*
- *Ranch Performance Horses*
- *Rope Horses (primarily calf and heel horses)*

PRIDE 1/4"X3/4" - ALSO KNOWN AS "BABY SLIDERS."

This shoe is what I go to when starting my young horses. It is a generic shape that is easily shaped to a hind pattern. The 3/4" width allows a young horse to learn how to control its hind end without scaring it. It will build confidence and still allow some slide that is needed in these disciplines. The punching allows me to use race nails which I find to be a plus, especially for young horses.

Continued on page 2



Fit to AFA Pattern



Pride 1/4"x3/4" Shaped

Continued from page 1

PRIDE 1/4"X7/8"

This is the next size in the progression of the series. It is probably the most versatile shoe of the Pride series, especially for the working horses. It has a natural hind shape and takes very little adjustment for most horses. The heel check is also a nice feature and is very easily modified if more is needed. This shoe generally will allow all the slide a working horse needs, but still give it what it needs for forward and lateral traction. It is a good step up for the younger reiners as it continues to allow improvement without causing uncertainty.

PRIDE 1" AND PRIDE FINE 1"

These are the most commonly used shoes for my reiners as they train up and get into competition. When you examine the shoes, you will see the subtle differences that may fit what you are looking for in your shoeing.

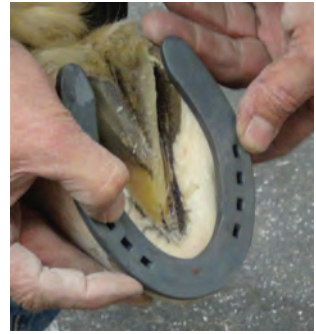
The original Pride 1" is punched slightly coarser than the Fine and has a six nail pattern. There is also slightly more taper in the heels on the original, allowing for better cleanout. I prefer the design and nail pattern of this shoe.

The Fine 1" is punched closer to the outer edge with an eight nail pattern. The Fine also has a more even heel width that may be desirable for some surfaces and horses. Both have a good hind shape that doesn't require much modification. When I go to 1" plates for the first time on a reiner, I don't like to roll the toe or rasp the nail heads so the horse can still maintain control as they progress.

Continued on page 3



Pride 1/4"x7/8"



Fitting Pride 1/4"x7/8"



Nailing the Pride 1/4"x7/8" with Liberty Carrera Nail



Pride Fine 1"



Pride 1"



Adding a clip to the Pride 1"

Get Cleaner, More Precise Cuts with These Quality Loop Knives

BLOOM FORGE

Diamond



Pride 1" Rolled Toe Modification

THE NATURAL ANGLE

Continued from page 2



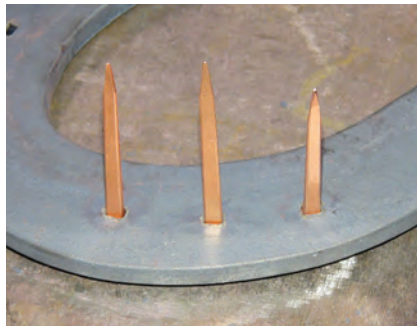
Pride 1-1/4"



Rocker Toe



Pride 1-1/4" with Liberty Carrera Nails. The extra "neck" of the Carrera fits securely in the punching.



Finished modifications



Heel check



Final Pride clipped

PRIDE 1-1/4"

Once a horse reached the 3 or 4 year old stage, I usually feel comfortable with this steel size if the horse needs it. This is a shoe that used to be most common for reining horses with amateur riders. However, now they are being used for horses in the amateur and pro levels.

This is obviously the shoe that provides the most surface contact for the stop. The width of the toe allows for rolling or even rockering if desired. Even though it has significant width in the toe and the branches, the tapered heels and heel checks allow for a good clean slide.

The Pride series shoes are all punched for slim nails with smaller heads, something I prefer whenever possible. I've used Liberty 4.5 Race and 5 Race for a number of years in these shoes. My favorites now are the new Liberty Carrera nails, either the medium or long (equal to the length of the 4.5 and a 5 Race). They have a slight extra "neck" that fits more securely in the punching, a slim shank and only a minimal amount of head above the shoe surface.

I also appreciate the steel quality of the Pride line as it allows me to modify shoes by clipping, rolling toes, and doing any other modifications I think will enhance the performance of the horse I'm working on.

ABOUT THE AUTHOR

Bobby Menker has been shoeing for over 30 years. He grew up in the western performance horse world, though today he shoes a lot of English performance horses as well. The ideas shared in this article are also in video format on the FPD YouTube channel and were posted this spring on Facebook as well.

SHOEING TIPS

Suspensory Shoe Modifications

By David Farley, CF APF-I

While there is no research to prove this modification is 100% effective, many veterinarians prescribe and want this modification on horses with suspensory ligament and superficial flexor sprains and or strains. This modification is believed to relieve the tension of these structures to facilitate healing, or at least keeps the horse in the ring competing.

Let me begin with a simple reminder that the suspensory is different than the deep flexor. We have all been taught to support deep flexor tendons with a bar shoe of extra heel length. I still do this today when necessary; however, I rarely have deep flexor issues with synthetic footing.

Today's rings or arenas with synthetic type footings are very sticky and provide more traction than most farriers can imagine. Horses working or showing in synthetic footing have little depth compared to dirt or sand. The foot lands and sticks with minimum slide or sinking like dirt or sand. Therefore, as you can imagine, without the heels sinking when the weight of the horse loads a limb, the pastern drops dramatically. The higher the heel the more exaggerated the pastern drop.

For this reason many veterinarians are prescribing Suspensory Shoes. The trainers that have horses with suspensory issues also have a desire to apply anything that can keep the horse going without time off.

These are the steps I take to modify the Kerckhaert DF Select hind or the SX-7 or SX-8 hind shoes for suspensory issues. I usually start with a shoe one size smaller than what fits the trimmed foot. The toe modification will add at least one size to the shoe.

Step 1: Take a good heat and, with the shoe ground side up, use the horn to draw the inside web to the desired width.

Step 2: Again, with the ground side of the shoe up, using the face of the anvil draw the toe out to the desired width.

Step 3: Fit the shoe to the foot, then grind the inside and outside branches of the shoe to allow the heels to sink in the footing.

Modifying the shoe by forging adds no weight to the toe. I personally don't like adding more weight to the toe by welding an insert to make a suspensory shoe unless the horse is not being exercised or in work.

Photos Continue on Page 5



NEW FROM BELLOTA
TOP LEVEL RASP

ANOTHER GREAT ADDITION TO THE LINE OF BELLOTA RASPS

- New aggressive rasp side (8 teeth/row) for easy cut, ideal for trimming
- 10% wider (1.95" wide) and 10% thinner than regular rasps for perfect leveling balance and control
- Intermediate file side for excellent and efficient finish
- Same weight as regular rasp models



VERY AGGRESSIVE RASP CUT



INTERMEDIATE FILE SIDE

BELLOTA PRO™ TOP LEVEL



View the Full Line of Bellota Rasps, Files and Tools at farrierproducts.com



LIBERTY **Cu**
A NAIL EVOLUTION **LIBERTY**

LIBERTY 5 COMBO SLIM AND 6 COMBO SLIM

The Essential Nail Combo

When you are looking for the right combination of horseshoe nails to carry you through the day, choosing the Liberty 5 Combo Slim and 6 Combo Slim is essential. Available in Steel and Copper (Cu) Shield.

5 Combo Slim

- Longer length and slightly slimmer shank than the Liberty 5 Combo
- Ideal for SX-8 shoes in larger size
- 52.55mm

6 Combo Slim

- Excellent choice for larger shoes punched for American nails, but will also seat in E punched shoes
- 54mm

View the full line of Liberty nails at farrierproducts.com

**THEY RELY ON YOU.
SO YOU RELY ON US.**

You work hard to keep your animals healthy, comfortable and productive. At Vettec, so do we. Learn more about our work ethic and high-quality hoof care products that get the job done. And done right. Vettec.com/works

Vettec
ANIMAL HEALTH

Continued from Page 4



*Kerckhaert DF
Select hind shoe
with ground surface
up. Start forging the
inside web toward
you.*



*Finish the forging on
the face of the anvil.*



*Check to see if
you forged to the
desired width.*



*Heels ground to
allow them to sink
in the surface.*

Photos Continue on Page 6

Continued from Page 5



Applied to foot. Note the medial heel is ground slightly narrower.



Using an SX-7, you can accomplish a similar result but with less metal you may not get the desired width.



Final forging of the SX-7 on face of anvil.



Medial heel ground to allow for sinking in the surface.

When Your Work Demands Versatility

CHOOSE THE NEW KERCKHAERT STANDARD MAX

Additional thickness and width in comparison to the Kerckhaert Standard and Standard Extra. Good shoe for modifications, ranch and trail work.

FEATURES OF ALL KERCKHAERT STANDARD SERIES HORSESHOES

- Full toe, balanced for the stock width
- V-crease allows appropriate nail choice for hoof and horse size
- Easily modified to front or hind pattern



NEW!
3/8\"/>

STANDARD MAX
SIZES 0 - 3



5/16\"/>

STANDARD
SIZES 00 - 3



5/16\"/>

STANDARD EXTRA
SIZES 0 - 3

For more information about the Kerckhaert Standard Series visit farrierproducts.com

TOOL TIPS

HOOF BUFFER MAINTENANCE

by Allen Horton, FPD Inc.

We sometimes receive Hoof Buffer attachments which have been reported as leaking. In most cases the fix for these units is quick and simple. Often these attachments need nothing more than a little tune up.

The most common problem encountered is a loose valve stem. These units turn quite fast and there is a possibility that the stem can become loose. If you encounter a leak this is the first place to look. The Hoof Buffer units are provided with a valve stem wrench. Sometimes the valve stem will get debris in it which prevents it from working properly. Use the provided valve stem wrench to remove the stem and check it for debris. If you encounter a leak this is the first place to check. The valve stem should be snug, not overtightened.

There are also eight screws that secure the bladder to the tool. These screws should be checked periodically. Tighten them on the diagonal so that one side doesn't become pinched. The bladders can become worn over time and need replacing. This is an inexpensive and simple maintenance procedure. Simply loosen the screws, remove the worn bladder and replace with a new bladder. Be sure the bladder is seated with the lip of the bladder completely over the end of the chamber. Tighten the screws on the diagonal to keep even pressure on the seal.

If you are experiencing a leak and can't identify where the leak is originating it may be helpful to spray the unit with soapy water or submerge in a bucket of water. This will show the source of the leak.

We see very few Hoof Buffers which can't be repaired. Most can be made good as new with minimal time and effort.



1. Hoof Buffer as it comes from the package. Buffer, valve stem, and valve stem wrench.



2. Hoof Buffer before maintenance work begins.



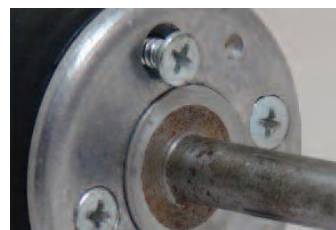
3. Hoof Buffer with bladder removed and ready for new bladder.



4. Hoof buffer handle.



5. Hoof buffer with new bladder properly covering end of buffer.



6. Putting screws back in place. Note diagonal tightening of screws.

THE NATURAL ANGLE is published to provide you with new and useful information about the industry. It is published through a cooperative effort of FPD, Kerckhaert Horseshoes, Liberty Horseshoe Nails, Bellota, Bloom Forge, Vettec and your supplier.

Articles in this publication are the property of *The Natural Angle* and cannot be reprinted without express permission. For information concerning reprints, please contact Dan Burke, FPD, P.O. Box 1328, Shelbyville, KY 40066 or Email: fpd@farrierproducts.com.

If you have questions, comments or ideas concerning the articles published in the Natural Angle, please contact your distributor. We welcome your input. *The Natural Angle* is designed and edited by Graphic Response. ■

Ask About These Quality Products Available at Monetta Farrier Specialties

Kerckhaert Century Front Clipped

The Kerckhaert Century Front is a traditional round shape front pattern with quarter clips. It is thicker than the Kerckhaert Triumph without the broad toe and a slightly finer punch. The width of heels provides support with less forging. Built-in sole relief, clips and good shape save time at the anvil. These shoes are symmetrical. V-Crease allows for broader choice of nails.



Liberty 6 Combo Slim Nails

Combo nails are a modification of the City or Slim nail. The heads are slightly larger but yet the shank is still similar to the City or Slim. They are often used for resetting when nail holes have enlarged or with shoes that have a wide crease. Liberty Horseshoe Nails are packed in secure plastic boxes with consistently sharp points, highly polished finish and excellent steel. 54.0mm in length. Liberty 6 Combo Slim are available in Steel and Copper (Cu) Shield.



Diamond Clinch Cutter and Clinch Block

The Diamond® Clinch Cutter is drop forged from high-quality tool steel. This clinch cutter has a double-beveled cutting edge that allows for ambidextrous tool usage. A flat surface on both sides makes this the perfect tool for close clinch cutting. Pritchel located on opposite side for cleaning and sizing nail holes.



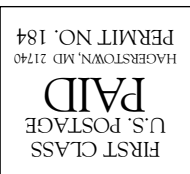
The Diamond® Clinch Block's hardened steel core is encased in strong polymer plastic; creating a tool that is durable and comfortable in all conditions. Wide, curved handle provides secure grip while offering additional protection.



Now with Two Great Locations
SAME GREAT SERVICE AND BROAD RANGE OF QUALITY FARRIER SUPPLIES

MONETTA FARRIER SPECIALTIES, INC. AIKEN, SC 29801 803.685.5101	MONET FARRIER @TRY COLUMBUS, NC 28722 828.894.0280
--	--

WWW.MONETTAFARRIER.COM



Return Service Requested
 1755 Park Ave SE
 Aiken, SC 29801
 Monetta Farrier Specialties, Inc.