

# NEWS FOR FARRIERS

## Find These Products at an FPD Dealer Near You:

[FARRIERPRODUCTS.COM/LOCATIONS](http://FARRIERPRODUCTS.COM/LOCATIONS)

### Kerckhaert Standard Rim Series Update

The Kerckhaert Standard Rim series has been replaced with the Standard Lite Rim. The Standard Lite Rim 0, 1 and 2 are now available in the new dimension; sizes 000 and 00 will be available soon. Standard Lite Rim size 2 is a new size for the range. The chart below shows how the dimensions of the shoes have changed. The change is minimal, and we hope the combination of the two styles into one will be more efficient for you.



Standard Lite Rim

TYPE OF SHOE	WIDTH OF SHOE	THICKNESS
Old Standard Rim 0	20.2 mm	8.7 mm
Old Standard Rim 1	20.2 mm	8.7 mm
Old Standard Rim 2	20.2 mm	8.7 mm
Old Standard Lite Rim 000	19.2 mm	8.0 mm
Old Standard Lite Rim 00	19.2 mm	8.0 mm
Old Standard Lite Rim 0	19.2 mm	8.0 mm
Old Standard Lite Rim 1	19.2 mm	8.0 mm
New Standard Lite Rim 000	19.7 mm	8.4 mm
New Standard Lite Rim 00	19.7 mm	8.4 mm
New Standard Lite Rim 0	19.7 mm	8.4 mm
New Standard Lite Rim 1	19.7 mm	8.4 mm
New Standard Lite Rim 2	19.7 mm	8.4 mm

### New Diamond Max Glide Rasp Coming Soon!

The innovative and unique manufacturing process of the Diamond Max Glide creates a high-quality rasp and file; 10% wider than the standard rasp. The rasp side features a 9-tooth pattern with slightly smaller teeth, and a file side with Chip Breaker.



## JUST A REMINDER

### KnKut Products

THE KNKUT LINE OF DRILL BITS COMPLEMENTS FPD'S RANGE OF DRIVE-IN STUDS.



Ask your preferred FPD Dealer about the new 17/64" Step Point Drill Bit (3-5/8" length), KnKut 5/16" Step Point Drill Bit, KnKut 17/64" Stubby Length Drill Bit and KnKut Drilling/Tapping Fluid. The Step Point bits are the most innovative, and make drilling for studs much easier because of the tip design. The KnKut brand is very high quality and all bits are made in the U.S.



### FootPro™ DIM

THE ONLY IMPRESSION MATERIAL YOU NEED

FootPro™ DIM is non-toxic, non-allergenic, dental grade silicone that is hand mixed to a moldable consistency and applied to the bottom of the equine foot with a pad to provide either a soft cushion (SOFT DIM20), or a firm supportive material (FIRM DIM40) when needed. Each box contains a total of either 4 lbs. or 2 lbs. (Equal Parts Catalyst and Base).



# What Happens When Hoof Care is Neglected



In July of 2020, a horse came into the FootPro Shop that proved to be a good example of what can happen when hoof care is not done on a regular schedule.

Dave Farley, CF APF-I came to the shop to talk about the evaluation process he follows before shoeing his horses. It was obvious the feet had not been trimmed for some time, indicating no farrier had been scheduled to keep them in reasonable shape. Beyond the excessive growth, Dave could see immediately she had a problem with her right front that needed to be dealt with. The owner told Dave the horse had just popped an abscess a few days before coming to the shop. In examining the size of the break in the hoof wall, it seemed likely a considerable amount of wall undermined as the abscess worked its way up the wall. There were also indications the sole had been compromised, as well.

Dave was able to get the foot trimmed, treated with FootPro CS+ and a shoe applied, despite the discomfort the abscess caused. He recommended the owners ask their vet how to treat the open wound and to make sure to follow up with a local farrier. The abscess appeared to have been ongoing for some time to cause this amount of wall separation and the poor condition of the hooves indicated she had not had any recent farrier work done either. The question was whether that neglect would change.

Fast forward to March of 2021. We contacted the owners to see if they would like to bring the horse back to the FootPro Shop to be shod by Hank Chisholm, CJF. We had no idea that she had not been done since July of 2020. You can imagine our surprise- and Hank's- when she walked into the shop. You can see from the images that the wall had grown considerably in the months since she was in the shop but she had not received any farrier care and a large area of the lateral wall of the right foot was broken off. What was still there was undermined and significantly detached. The sole was also undermined and had cracks and separation that were going to require extra care. Hank wasn't rattled, he just knew this was going to be a tedious shoeing job that was going to take some time to get things back on track. Have a look at the images from 2020 when the abscess first caused damage to the wall and the work Hank went through to get this horse back on a good path. This may be a good article to share with your clients that don't stick to a good schedule. Perhaps they'll understand why it's important for the health of the horse to work with you to get a reasonable schedule set up.

We had Bobby Menker, CJF APF-I come to the shop for two follow-up shoeings on this horse after Hank got her on track for recovery. The hoof is almost completely grown back and in a cycle or two, she should be as good as new. Let's all hope the owners learned how important it is to keep a regular schedule for her hoof care, whether it's just to be trimmed or to be shod.

The work that Dave, Hank and Bobby did is documented in video footage that you can see on our YouTube channel, [YouTube.com/farrierproducts](https://www.youtube.com/farrierproducts). ■



July 2020 - Annabelle before trim.



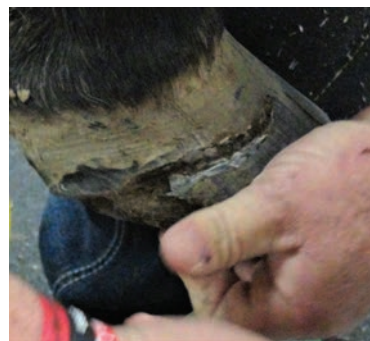
March 2021 - missing wall and lateral Toe quarter undermined.



July 2020 - sole area. Note indications of abscess in toe area.



July 2020 - shod with Diamond Tracker Shoe.



March 2021 - Hank starts to investigate damaged wall.



March 2021 - sole pared and some damaged wall removed to begin trim.





March 2021 - rasping outer wall to get indication of true shape.



March 2021 - additional wall resection and clean up, removing anything not attached or healthy.



March 2021 - using Dremel tool to get final clean up at juncture of wall and laminae.



March 2021 - using heat gun to dry area to be patched after shoe has been applied.



March 2021 - applying first layer of Adhere.



March 2021 - application of second and third layer.



March 2021 - Vettec Equi-Pak applied to provide support and protection.



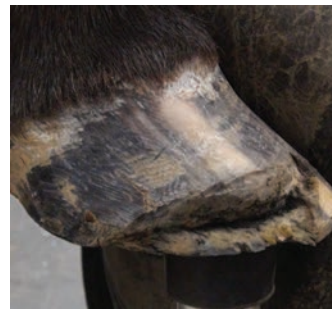
March 2021 - Vettec Adhere dressed before final nails are driven.



March 2021 - nails driven through material, ready to clinch.



March 2021 - after clinching, note the ledge of material at top to help with bond.



By late April 2021 hoof is growing down and a much smaller area requires the Adhere patch.



In June 2021 reset, very little patch needed to fill void in toe quarter.