

# NEWS FOR FARRIERS

## RANGER PLAIN

The Ranger Plain is a 9mm version of the Ranger Lite. The extra thickness and slightly wider material make it an excellent choice for horses that need stronger shoes for rough working environments. With a higher carbon steel than St. Croix, for longer wear and the V-style crease, ensuring a better fit, you will find this shoe is the best choice for the best price. Punched for City or Slim.



**One Shape 9mm - Unclipped - 00, 0, 1, 2, 3**

## RANGER LITE

The Ranger Lite by Kerckhaert has been designed for everyday use in both work and pleasure. It is easily shaped, hot or cold, and has a generic shape for front or hind. With a higher grade of steel for better wear and v-crease for better fit, this shoe provides the perfect solution for farriers who want the best results at the best price. Punched for City or Slim.



**One Shape 8mm - Unclipped - 000, 00, 0, 1, 2, 3**



*You'll find the Ranger Lite and Plain are priced lower than the same styles in the St. Croix line in most farrier supply shops.*



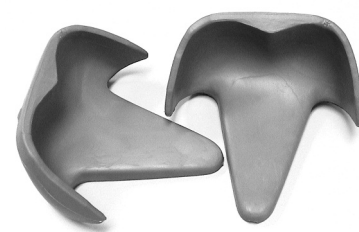
**FOR BEST RESULTS  
USE LIBERTY NAILS  
WITH THE NEW  
RANGER SERIES**

ARTICLE FROM THE NATURAL ANGLE VOL 3 ISSUE 1

Read more articles at [www.farrierproducts.com/farriery](http://www.farrierproducts.com/farriery)

## Emergency Support for the Hoof

Treatment for many injuries to the hoof can be aided by the immediate application of a frog support device. Veterinarians and farriers for years have found this first stage treatment to be complimentary to the more extensive treatment that may follow. Farriers can train horse owners to apply a simple device such as the Lily Pad that is described in this article. Remember that in many cases time is critical to the success of the overall treatment and immediate attention can often aid in recovery.



*Read more about Lily Pads on FPD's Field Guide for Farriers: [farrierproducts.com/fieldguide/tools/accessoryitems.html](http://farrierproducts.com/fieldguide/tools/accessoryitems.html)*

We'll mention a few more common injuries that have been helped by immediate use of a frog support device. Any emergency support device should be designed to take the load off the hoof wall or sole and put it on the frog. Remember that this device is only an aid and not a treatment. Consult with your veterinarian if possible before you apply support but certainly as quickly as possible afterwards.

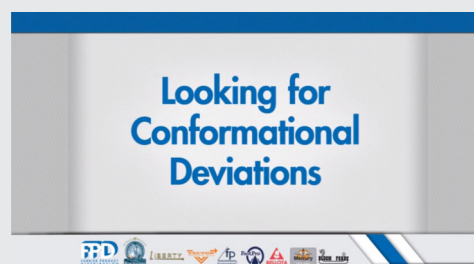
Common Injuries and Problems: Sole Bruises, Punctures or Abscesses, Quarter Cracks, Corns, Broken Bars, Sheared Heels, Acute Laminitis.

*Continued on Page 2*

## New Educational Video

New video installment of the FootPro™ Information Series for the Professional Farrier is now available for viewing on the FPD website at [www.farrierproducts.com](http://www.farrierproducts.com) - "Looking For Conformational Deviations."

Click Here to View » <http://youtu.be/C4bELHP7vtM>





1. Untrimmed pad on foot, pads almost always need trimmed to fit frog.
2. Trimmed pad, behind point of frog and not extending out sides of frog.
3. First strip of duct tape to hold pad in position. 4. You can see the support given by pad. 5. Build your set of strips to hold pad on before going to foot. 6. Tape applied to foot. 7. Last step, wrapping tape around circumference of wall.

*Continued from Page 1*

The application of a device like the Lily Pad is simple but requires attention to a few details. Begin by trimming the pad so that the frog piece stops 3/8" back from the point of the freshly trimmed frog. It should also be trimmed on the sides so the sulcus is clear, not covered by the pad. A belt sander is very useful in this fit. However, it can be trimmed to size with a knife, nippers or shears.

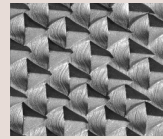
The positioning of the pad is the most critical step in the process. As the pictures illustrate, you can hold the pad in place after trimming to size by placing one strip of duct tape around the pad at the heel area (below the bulbs) and forward along the wall on both sides. To make the job easier, don't place the duct tape strips on one at a time after this positioning. You can put your strips on a flat, clean surface overlapping each until you feel you have enough to cover the bottom of the hoof and overlap so that you can bring the tape up the wall. After placing this on the hoof you can wrap around the circumference of the hoof as a final step.

This easy frog support application is cost effective. As a farrier you can keep a few pairs of these pads in your inventory at a low cost. You can also encourage your owners to keep at least a pair of pads and a roll of duct tape in their tackroom so that they can apply the device if necessary.

## Bellota Rasps

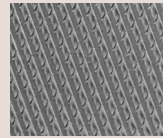


Good hoof care starts with the trim. Whether the foot will be shod or left barefoot, getting to good balance and a solid, sound hoof is a goal for all farriers. Using Bellota Rasps can help you get the best results in the least amount of time.



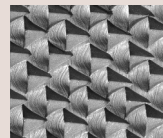
### Top Sharp Rasp

The aggressive design of the file side on the Top Sharp lets you get in and get out with maximum results.



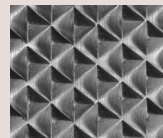
### Classic Rasp

The smooth cut of the classic file side is the best choice for a smooth finish.



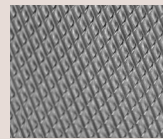
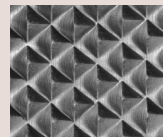
### Razor Rasp

Like its name implies, the rasp side of the Razor offers an extreme cut when compared to other Bellota rasps, while the file side is also coarser. This 14" rasp incorporates a tooth design to reduce clogging and to retain its sharpness.



### Raptor Rasp

The extra width of this rasp – 1/2" wider than other Bellota Rasps – provides a greater cutting surface. The 14" Raptor features a maximum cut on the rasp side; with a coarse cut on the file side.



Be sure to like FPD on Facebook at [facebook.com/FarrierProductDistribution](https://www.facebook.com/FarrierProductDistribution), visit the HoofWall™ Blog at [farrierproducts.com/blog](https://www.farrierproducts.com/blog) and subscribe to us on YouTube [youtube.com/FarrierProducts](https://www.youtube.com/FarrierProducts).

## FPD's Field Guide for Farriers

[farrierproducts.com/fieldguide](https://www.farrierproducts.com/fieldguide)

FPD's Field Guide for Farriers gives you a useful on-the-go guide to the best horseshoes, nails and tools for various disciplines with tips and videos on how best to use them.



Scan code with your smart phone