

THESE PRODUCTS NOW SHIPPING TO DEALERS THROUGHOUT NORTH AMERICA

## Ranger Plain Now Available

THE SECOND STYLE IN THE NEW RANGER SERIES - THE RANGER PLAIN - IS NOW AVAILABLE THROUGH YOUR FPD DEALER.

The Ranger Plain is a 9mm version of the Ranger Lite. The extra thickness and slightly wider material make it an excellent choice for horses that need stronger shoes for rough working environments. With a higher carbon steel than St. Croix, for longer wear and the V-style crease, ensuring a better fit, you will find this shoe is the best choice for the best price.



## KERCKHAERT PRIDE 1" SLIDING PLATE NOW AVAILABLE IN SIZE 11.5

The Kerckhaert Pride is a typical shoe used on the hind feet of reining and rope horses. This shoe features a slight taper to 7/8." There is an excellent heel finish on all models and higher carbon steel. Shoes are symmetrical. Punched precisely for 4-1/2 Race, 4-1/2 Race XS, 4-1/2 Slim and 5 Special, this shoe requires little filing to reduce the head of the nail.



## KERCKHAERT INTRODUCES LIBERTY 5 SLIM XL NAIL

Responding to requests from Delta users for a longer Liberty 5 Slim nail, Kerckhaert is now producing the 5 Slim XL. Like all of the Liberty nails, the XL is clean, with consistent quality in a strong material. The Slim XL is 52mm long; the 5 Slim is 49.5mm long.



## JUST A REMINDER



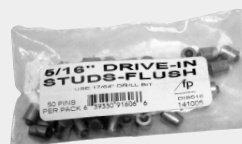
Be sure to like FPD on Facebook at [facebook.com/FarrierProductDistribution](https://facebook.com/FarrierProductDistribution), visit the HoofWall™ Blog at [farrierproducts.com/blog](https://farrierproducts.com/blog) and subscribe to us on YouTube [youtube.com/FarrierProducts](https://youtube.com/FarrierProducts).



Check out FPD's Field Guide for Farriers on your desktop, laptop or mobile device at [farrierproducts.com/fieldguide](https://farrierproducts.com/fieldguide).

## Traction Devices

Winter is here - stock up on traction devices now. FPD's tungsten pins, drive-in studs and V-Trak nails are traction products that meet the demands of the professional farrier.



# Simple Steps to Provide Support

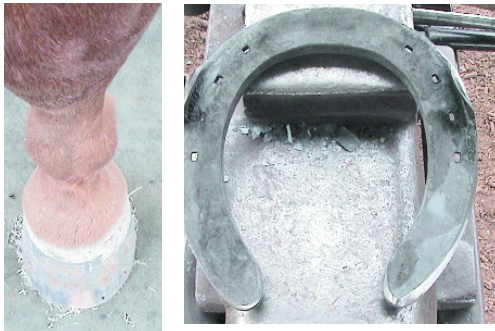


The aged horse that you see in the photos to the left has obviously been out of balance for some time. You know when you see a case like this you're not going to fix all the problems that have been created. But you've got to start somewhere and the support you can provide can go a long way toward making the horse more comfortable.

You need a shoe that has enough width in the heels to provide a full fit. This is one of the features that Kerckhaert shoes are always going to give you. A shoe with a narrow tapered heel just doesn't have enough material in it to get the job done. You can see that the inside (medial) heels in both feet are run under, probably a result of too much wall length for too many years. If you are going to support the hoof capsule, imagine where the shoe would be if you were fitting the coronary band, not the perimeter of the wall. Fit it to that point.



The shoe on the anvil is the left front shoe. The bevel was put on the inside heel (right side of shoe) just to give it a slight slope in case it gets stepped on. The shoe is nailed on with the frog lining up in the center of the shoe. This is the goal for providing good support in this case. You can see the amount of steel showing on the inside. Don't be afraid to put the shoe there. The rasp is at an angle that you would normally hope to see the wall follow. By fitting the shoe to that point, you have given the foot much better support.



This is a good situation for Vettec Adhere or Superfast. In order to help keep the shoe from being stepped on you can fill the area and dress it so that there is no "ledge" sticking out. The Adhere was used here, with both inside heel areas being filled without having to stop to change tips, build a dam or worry about the material falling away from the wall. Once dressed the foot looks more normal and there is very little risk of the shoe being pulled. The foot may never completely remodel to "normal" but it will have a chance to improve and in the meantime you have given the limb the support it needs.



There are a lot of horses that need this kind of medial support in front. You will also find this to be a very useful technique for supporting the outside (lateral) heels of the hind feet, also an area that commonly ends up with support problems. The key is to look carefully at the whole hoof capsule, including the coronary band and the position of the frog in the foot. If the frog is not in the center of the hoof it is very likely you need to give more support to one side or the other by fitting the shoe wider. ■

